



MICRO THERMO
TECHNOLOGIES

MT Energy



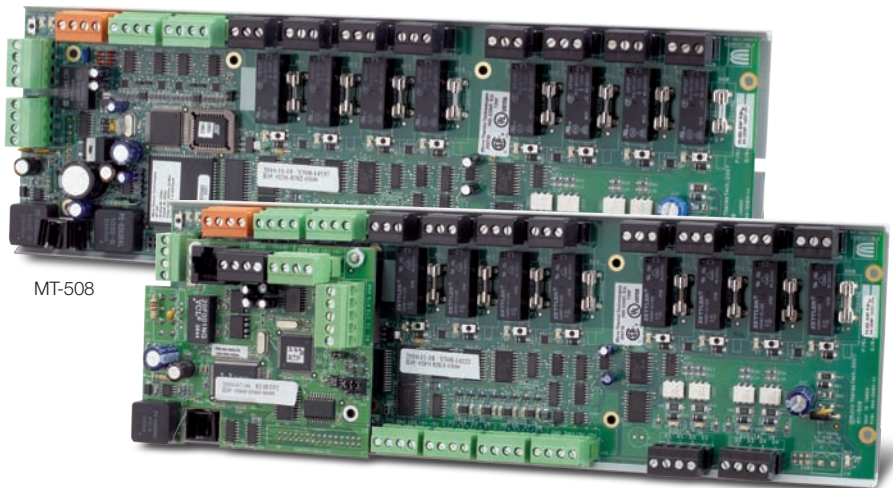
Customer Value

Reducing energy consumption, or load shedding, can significantly lower the cost of operating and maintaining a supermarket. Micro Thermo's Energy node is the most advanced load management application in the supermarket control industry today. Programmed with your customized settings, our Load Shed Energy application optimizes supermarket energy consumption and lowers your energy costs.

Micro Thermo's Energy application effectively reduces electrical demand in accordance with user-defined configuration parameters that you specify using the MT Alliance™ software configuration tool, and then determines an optimum Load Shed strategy according to calculated saved cost. The Load Shed application can be configured to operate with:

- Real-Time Pricing – Using the MT-560 Communication Gateway control board, in conjunction with the MT-508, supermarkets can obtain a real-time reading of the local price of energy and that data can be used to determine effective Load Shed levels.
- Power Factor or Sensor Reading(s)
– Load Shed can be performed based on straight kW reading or average of specified sensor readings.
- Global Load Shed Request – Chain supermarkets can send Load Shed strategies to groups of stores via Internet
- Electric Generator Power – Load Shed strategies can be set up for situations where stores are on emergency backup power

Energy Nodes



MT-508

MT-508 in conjunction with MT-560 Communication Gateway control board

Key Features and Benefits

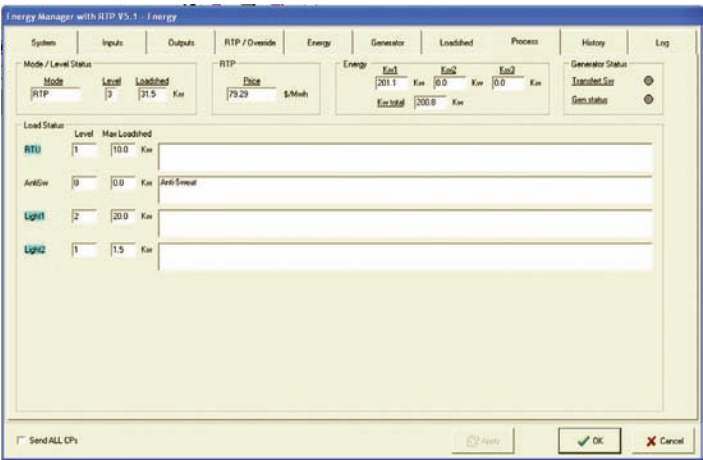
- Integrated solution within your Micro Thermo system – No need for third party components
- Optimizes energy consumption within all your stores
- Saves energy and money
- Fast return on investment



ENGINEERING YOUR SUCCESS.

Load Shedding Application

The new Micro Thermo Load Shedding application is a combination of existing solutions within your MT Alliance™ supermarket control system. With specific algorithms that allow you to load shed any components of your stores. With this load shedding application you can load shed a physical contactor (i.e.: water heater, lighting relay, etc.) or use the MT Alliance™ network to load shed any physical relay controlled in your store. Load shedding command can be received through the application via a physical reading of power consumption of the store on the load shedding board. The command can come from the corporate office via the intranet of the chain when using the EFM Workstation™. The load shedding command can also be based on the Real-Time pricing signal of your local power company via our MT 560 communication gateway and finally, the load shed command can be used in conjunction with your generator at the store. All the possibilities are offered to the user. They can be used together or alone depending on your specifications. The load shedding application is part of your MT Alliance™ system, so, no need to get a third party involved when the application can be part of your already existing control system.



Specifications	
Universal Inputs	8 Universal Inputs (Analog or Digital); 0-5V, 0-10V, 4-20mA, Thermistor, Low-pass filter input conditioning
Digital Inputs	4 Digital Inputs: Optically Isolated (0-15V)
Digital Outputs	8 Type C Relay Outputs: SPDT, 2A, 250 Vac. Protected by on-board fuses.
Analog Outputs	4 Analog Outputs configurable: 4-20mA, 0-5V, 0-10V, 2-10V. Protected by current limit (max 20mA)
Dimensions	12.25" x 4.0" x 1.5" (312mm x 102mm x 38mm)
Mounting	SnapTrak Panel or Wall Mounting
Electrical	24 Vac Center Tap Transformer 15VA
Environmental	Operating and Storage: -40–75°F (-40–168°C) 5-95% RH, non-condensing
Listings	UL Listed, CSA Approved

Supermarket Controls Solutions...Simply Powerful



Specifications subject to change without notice
MT Alliance™ is a trademark of Parker Hannifin Corporation
LonWorks® is a registered trademark of Echelon Corporation
Windows® is a registered trademark of Microsoft Corporation



Parker Hannifin Corporation
Sporlan Division
206 Lange Drive • Washington, MO 63090 USA
phone 636 239 1111
fax 636 239 9130
www.microthermo.com